

1.1
1.2
1.3

2.1
2.2
2.3
2.4



.....

2022 1 1 12 31

.....

.....

2022

.....

.....

www.supQ01.com



688777.SH 1999

DCS SIS

135

1

5S " S2B 3
APP IT APEX 5T PT ET OT AT
2022 " 5S " S2B

i-OMC

2022 DCS 36.7%
SIS 29.0%
19.5%

APC

MES



)%

FFFF



+%

70%

3.0+ 4.0

+%

2013-2022

311

DCS

ECS-6

19.36

2022

2022

9







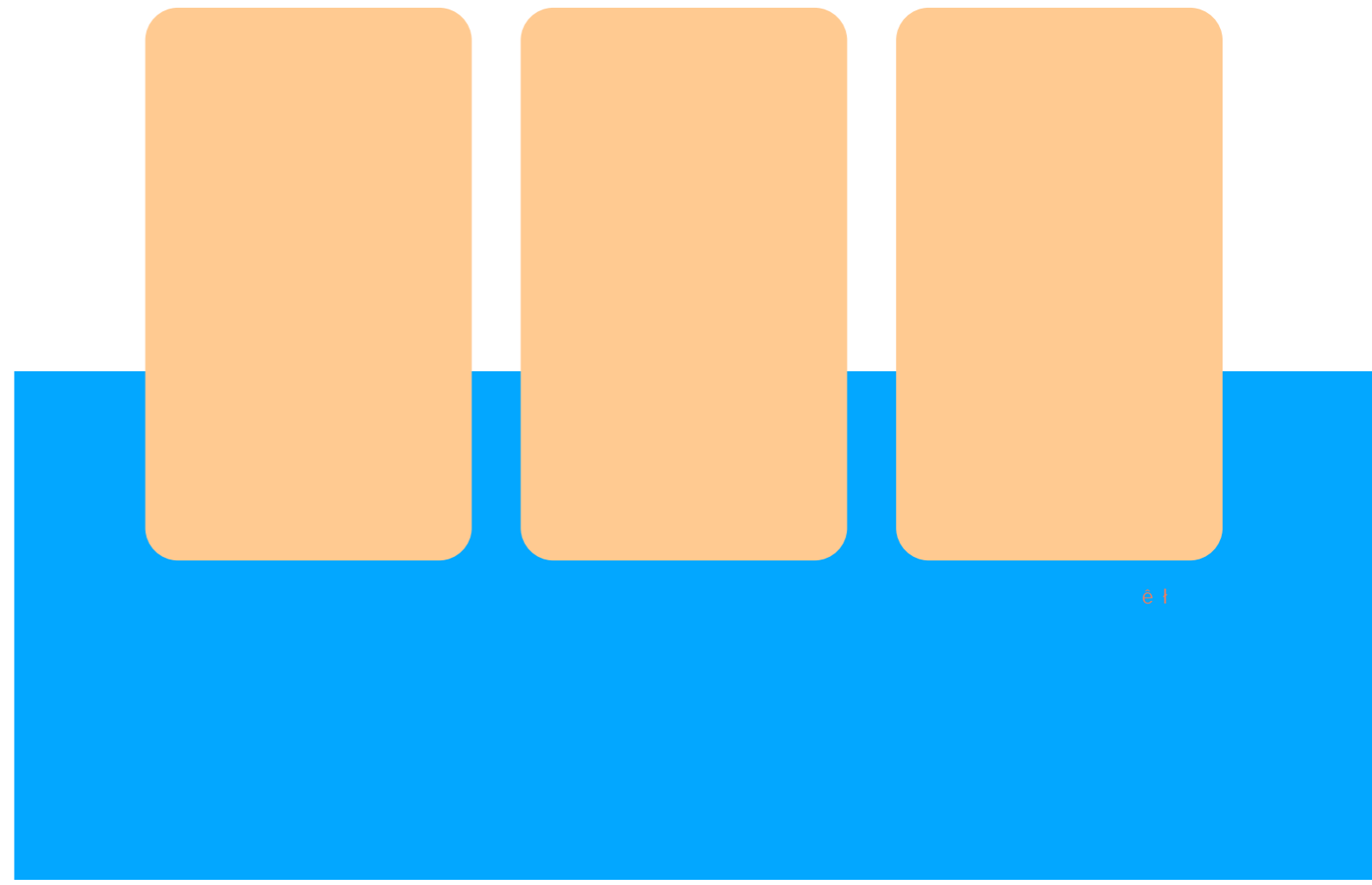
		1,624,700	1,479,270	1,163,970
	&	0.0015	0.0017	0.0022
	&	3,878.27	/* # , -‰	3,306.31
	& &	0.0072		0.0105
	fl	0.57		10.95
	&	155.08		84.76
	&	3,723.19		3,221.55
	&	/		/

	2022	2021	2020
	6,528,476	6,545,735	5,648,867
&	12.1571	14.4836	17.8832
	71,725	56,992	39,203
	890.36	874.58	742.75
&	0.0017	0.0023	0.0024

&\$&&

-%

)))



e l

- %

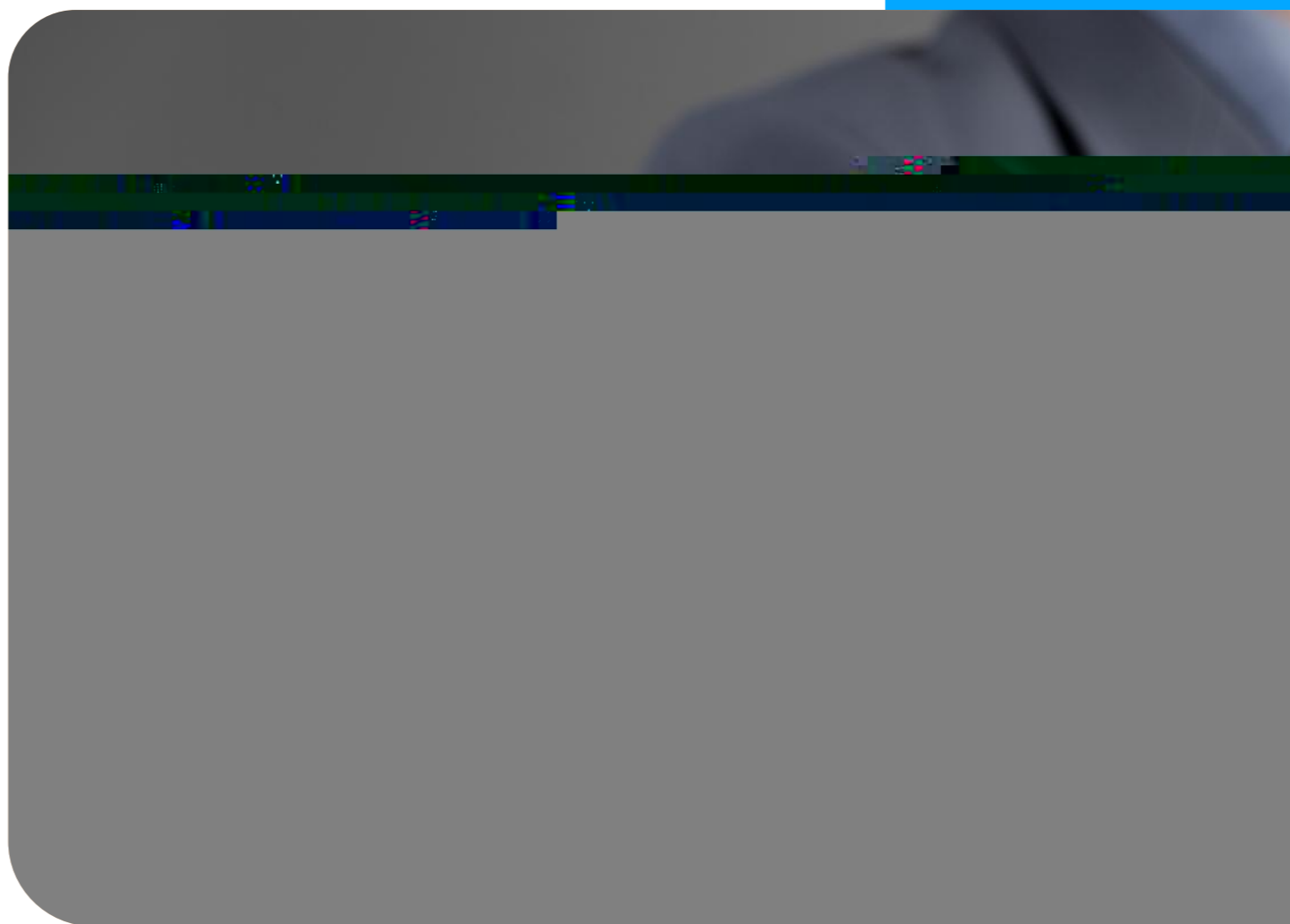
99%。

. %

.....

2

~





1%

	2022	IPD	ISC	ITR
TQ&SM				
	IATF16949			
	40			
627	88	2022	139	173%
DMAIC				
	19		180	
	AI713-H			

④F).''('

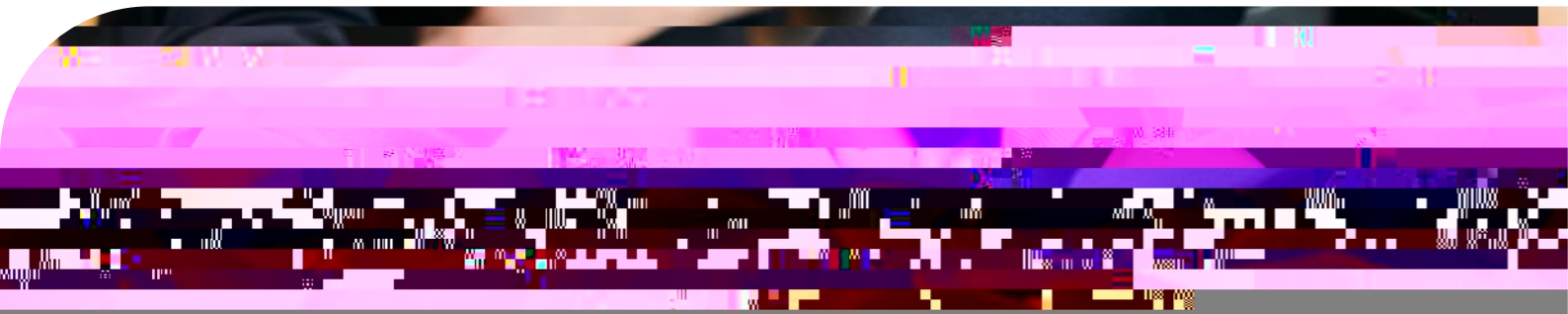
AAA

e - ó | -



(' % ' (* ,

	135		135	1		5S " S2B	3
	i-OMC	"	APP APEX	5T			
	5S " S2B						
5S		Sales		Spare parts		Service	Specialists
	Solutions					S2B Service to Business	
	5S " S2B						
							5S 150



((%`

		2022	2021	2020
		693,019,197.21	496,671,293.01	362,027,515.73
	fl	10.47	10.99	11.46
		2,092	1,730	1,385
	fl	34.20	34.21	33.84
		78	58	368
		65	62	74
		352	300	200
		134	83	40
		0	0	0

